



# ASHDENE PRIMARY SCHOOL



TUESDAY 10TH DECEMBER

# NEWSLETTER

## IN THIS ISSUE

- RESPECT Awards
- Personal Development
- This Week in Pictures
- Attend. Achieve. Succeed
- Reading Leaderboard
- Christmas Jumper Day
- Christmas Parties
- Parent Lunch
- School Lunches
- WFA
- Cooking Club
- Computer Xplorers
- Sewing Club
- Chess Club
- Drama
- French Club
- Spanish
- Bricks4Kidz
- Picture News
- Key Dates
- Community News
- Contact Us



## Empathy

This week's RESPECT value champions are:

RB	Jessica M
RG	Ada J
1H	Olivia D
1SH	Wilfie G
2C	Thomas W
2G	Elle F
3B	Maggie M-S
3H	Alice S
4C	Rose E
4I	Annabelle H
5B	Hollie R
5AG	Sophie S
6R	Winnie D
6RG	Elizabeth W



Excellence: everyone, everywhere, every day.

# The Times Parent Power Guide 2025

We are very pleased to share that Ashdene has been recognised in The Times Parent Power league tables for the second year running. We have been ranked at number 55 nationally based on our key stage two attainment data in 2024.

We have also been ranked as 6th in the Northwest. A huge well done to our wonderful children and staff for their hard work which has resulted in this recognition. Thank you also to our families for your continued support.

<https://www.knutfordguardian.co.uk/news/24775404.two-wilmslow-primary-schools-among-north-wests-top-10-best/>

Ashdene Primary School							
State primary							
National rank							
55=		n/a		335		60	
Rank last year		Total score		Pupils who sat KS2 exams			
Need to know							
Head teacher		Gender of entry		Total pupils			
Collette Mather		MIXED		412			
Rank	School	Town	Reading (averaged scaled score)	Grammar (averaged scaled score)	Maths (averaged scaled score)	Total	Entry gender
2024							
51	Cheam Fields Primary Academy	Sutton	112	112	111	335	●▲
52	Montpelier Primary School	London	111	113	111	335	●▲
53	St Antony's RC Primary School, Forest Gate	London	112	112	111	335	●▲
54	Yardley Primary School	London	111	112	112	335	●▲
55=	Ashdene Primary School	Wilmslow	110	114	111	335	●▲
55=	St Teresa's RC Primary School, Aspley	Nottingham	112	112	111	335	●▲
55=	The Olive School, Bolton	Bolton	111	113	111	335	●▲
58	Hallsville Primary School	London	111	113	111	335	●▲
59	Grove Park Primary School	London	113	113	109	335	●▲
60	Hoxton Garden Primary School	London	111	113	111	335	●▲



Excellence: everyone, everywhere, every day.



# Personal Development



## Year 5 Fire Service Visit

Last Wednesday, Year 5 were lucky enough to watch a Pantomime style performance about how to keep safe on the roads. We learnt about the importance of wearing a helmet, visible clothing and having lights on our bikes (white at the front and red at the back) through a Christmas themed performance. We then watched a superhero and villains performance about how to ensure we are safe when travelling in a car. Finally, we learnt about the different road crossings and how to cross safely through a performance of the Wizard of Oz.

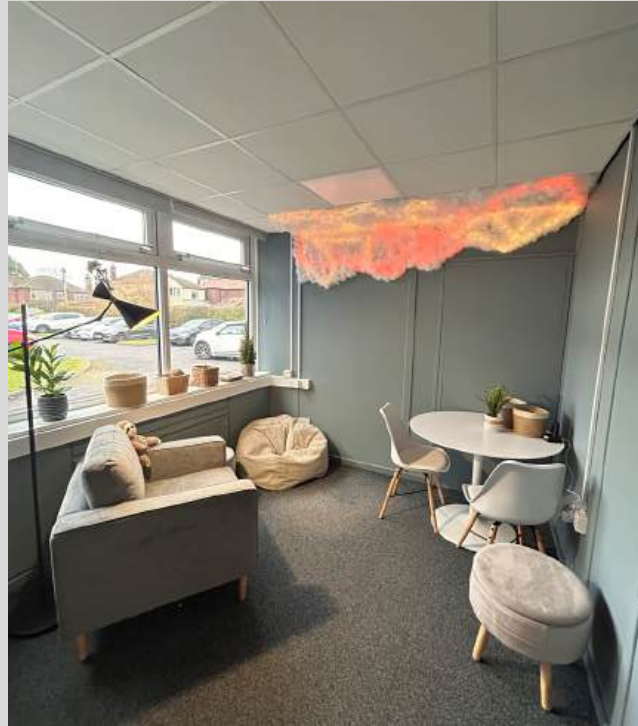
Thank you to Cheshire East Fire Service and the students of Manchester College who gave us a very entertaining - and informative - performance!



Excellence: everyone, everywhere, every day.

## Relaxing New Space

We are delighted with our beautiful new Learning Mentor room, complete with colour-changing clouds! This wonderful space will offer a sanctuary to children in school who need emotional support, for whatever reason. We are very lucky to have this facility, and incredibly grateful to parent Sarah Moulson at White Circle for donating her time, expertise and resources to help make this happen



## Christmas Fair Choir

Some lovely pictures sent in to us of Ashdene Choir from the Christmas Fair.



**Excellence: everyone, everywhere, every day.**



# Sport

## Boys Football

Well done to the boys who took part in last week's football competition. They won all their games and, as overall winners on the day, progressed through to the regional competition.

Go Ashdene!



## Active Ambassadors



Well done to 4I for being the KS2 Active Class of the Week with 120.5 extra active minutes.



Excellence: everyone, everywhere, every day.

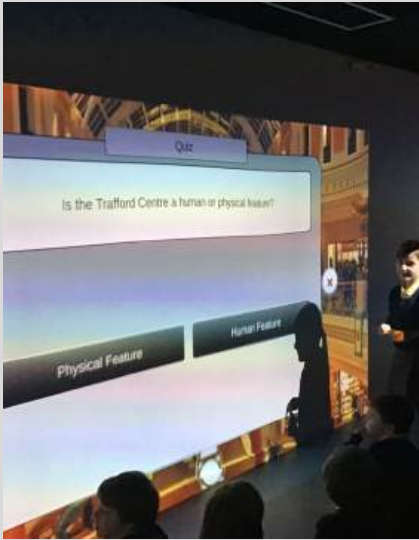


# This Week In Pictures

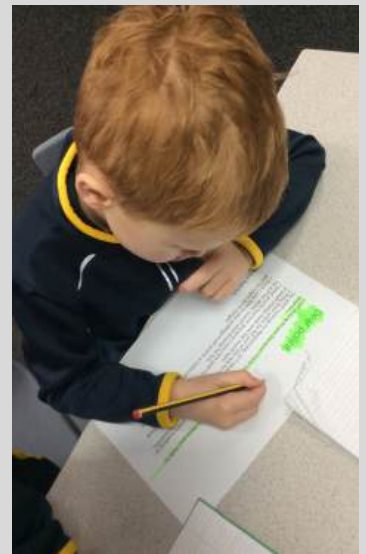
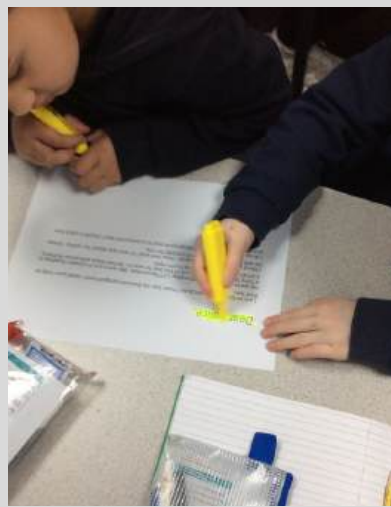
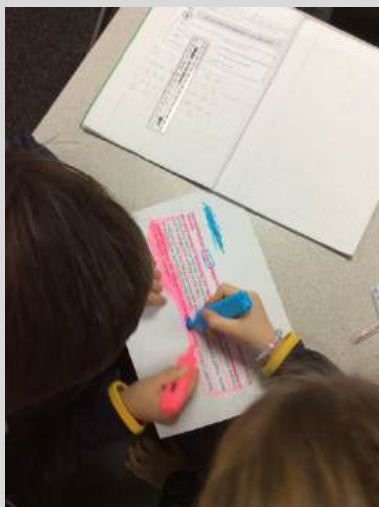
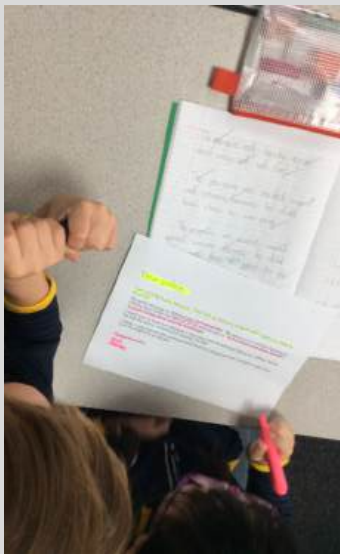
## Reception



## Year 1



## Year 2



Excellence: everyone, everywhere, every day.



# This Week In Pictures

## Year 3



## Year 4



## Year 5




## Year 6



Excellence: everyone, everywhere, every day.

# Attend. Achieve. Succeed.



Attendance	
RB	99%
 RG	99.7%
1H	98%
15H	97.3%
2C	97.7%
2G	97%
3B	98%
3H	96.7%
4C	95.3%
4I	99.4%
5AG	95.3%
5B	94.1%
6R	93.1%
6RG	93.9%



**Attendance Update**

Our attendance target is **97%**. We all need to work together on ensuring children are in school EVERY day and not missing any learning.

Our attendance for the week is:

**97%**

Our attendance for the year to date is:

**97%**



Well done **RG** on their impressive attendance last week!



Excellence: everyone, everywhere, every day.



# Reading Leaderboard

**READING LEADERBOARD**  
Ashdene

**Year 3**  
Henry G  
Leonard C  
Hari C  
James F  
Luke M  
Aya P  
Oliver P  
Ella W  
Rosie D  
Alice S  
Cole W  
Emily B  
Sophia B  
Daisy F  
Theo S  
Nia R  
Sophia D  
William H

**Year 4**  
Dario B  
Rose E  
Teddy G  
Violet F  
Annie B  
Reeva P  
Ella-Daisy R  
George G  
Isla V  
Elias Z  
Felix C  
Edward A  
Ralph M  
Jessica S  
Henry D  
Lucas McC  
Rosa R-A  
Sophia R-A  
Oliver E-C  
Thomas H  
Natalya W

**Year 5**  
Clara C  
Florence E  
Georgina K  
Teodor K  
Lia T  
Connie L  
Austin S  
Bibi W  
Harry T  
Marco W  
James P  
Maddie A  
Olivia B  
Amelia P  
Arabella D  
Georgia L  
Nicolas S  
Edward W

**Year 6**  
Emily B  
Megan F  
Thea McG  
Elliot S  
Ronan F  
Isabella M  
Henry E  
Lucy C  
Teddy C  
Anna P

## Christmas Jumper Day

Children can come to school wearing their Christmas jumpers tomorrow. If you are able to, we ask for a £1 donation to support the charity 'Save the Children'.

The Christmas jumpers replace children's school jumpers for the day.

With their Christmas jumper, children should wear their usual Wednesday uniform/PE kit.



Excellence: everyone, everywhere, every day.

# Christmas Parties

On Friday 20th December, all classes will be having their Christmas party. All children can come to school in non-uniform/party clothes on this day.

If your child has a PE lesson on a Friday please ensure the clothes they wear are suitable for PE lessons.



## Parent Lunch

If you would like to attend the **Year 3** parent lunch on **Thursday 23rd January at 11.30am**, please book a place by emailing your food choice from the menu below to [admin@ashdene.cheshire.sch.uk](mailto:admin@ashdene.cheshire.sch.uk).

(please note this is an invite for parents to experience the new school meal provision; there is no charge)

The deadline for booking a place is Wednesday 8th January at 4PM - no orders can be accepted after this date.

### MENU

Tomato and Herb Pasta Bake

Beef Chilli Con Carne with Nachos

Jacket potato –cheese-beans-cheese and beans-tuna-vegan cheese

Cheese and ham melt

Cheese and ham wrap



**Excellence: everyone, everywhere, every day.**



# School Lunches

The kitchen staff have informed us that some children are unaware of the parent selected meal choice when collecting their lunch from Dolce serving hatch. This has led to some children becoming upset as they don't like what has been chosen for them. Could we ask that children are told what meal has been selected for them and include children in the meal selection process when/if possible.

If your child wants a school meal you must place your order/meal selection on SchoolGrid before 9am on that day or in advance to avoid your child's choice being unavailable.

Please note you can pre-order meals in advance for several days or weeks via your account. **All Schoolgrid accounts MUST be kept in credit at all times.** Dolce will email notify you if your account has slipped into arrears. However, please ensure debt is cleared immediately and a credit balance is added for all paid meals in Key Stage 2.

## Reminder

### **Parents of Reception, Year 1 and Year 2**

Although your child is in receipt of universal free school meals, you must access SchoolGrid to log your child's meal choice including your child in this selection .

### **Parents of KS2 (Years 3, 4, 5 and 6)**

Please ensure your school meal account has a credit balance for all meals in advance. You must access SchoolGrid to log your child's meal choice including your child in this selection.



**Excellence: everyone, everywhere, every day.**



## AFTER SCHOOL FOOTBALL REGISTRATION FORM



### BOYS AND GIRLS OF ALL ABILITY WELCOME!

Players will need to wear kit suitable for all weather with shin pads, football boots and trainers. To book your child onto the relevant course, complete the form below and return it to the school office with correct payment. Please note all groups are mixed apart from our girls only training groups highlighted below.

JAN - FEB 2025

SCHOOL	SCHOOL YEARS	DAY & TIME	DATES	PRICE
ASHDENE	Reception to Year 6	MON 3.20 - 4.30	6th Jan to 10th Feb	£51.00
FULSHAW ST. ANNE S	Years 1 to 6	MON 3.20 - 4.30	6th Jan to 10th Feb	£51.00
GORSEY BANK	Years 1 to 6	TUES 3.20 - 4.30	7th Jan to 11th Feb	£51.00
MOBBERLEY	Years 1 to 6	TUES 3.20 - 4.30	7th Jan to 11th Feb	£51.00
LINDOW	Year 2 to 6 Girls Only	WED 8.00 - 8.45 am	8th Jan to 12th Feb	£45.00
ASHDENE GIRLS	Year 2 to 6 Girls Only	WED 3.20 - 4.30	8th Jan to 12th Feb	£51.00
WILMSLOW ACADEMY	Reception to year 6	WED 3.20 - 4.30	8th Jan to 12th Feb	£51.00
LACEY GREEN	Year 2 to 6 Girls Only	WED 3.20 - 4.30	8th Jan to 12th Feb	£51.00
GORSEY BANK	Year 2 to 6 Girls Only	THU 8.00 - 8.45 am	9th Jan to 13th Feb	£45.00
LINDOW	Rec to 6	THU 3.20 - 4.30	9th Jan to 13th Feb	£51.00
LACEY GREEN	Years 1 to 6	FRI 3.20 - 4.30	10th Jan to 14th Feb	£51.00

e: [erik@academyfootball.co.uk](mailto:erik@academyfootball.co.uk) t: 07792 791 382



### ALL BOOKINGS ARE NOW MADE ONLINE

To sign up to one of our after school clubs simply complete the online form with payment and your child will automatically be added to our register for this terms sessions!

Discover more and book your place now at:

[WWW.ACADEMYFOOTBALL.CO.UK/PLAY-FOOTBALL/AFTER-SCHOOL-CLUBS](http://WWW.ACADEMYFOOTBALL.CO.UK/PLAY-FOOTBALL/AFTER-SCHOOL-CLUBS)



Online registration for WFA's Afterschool Football Sessions for next half term (January and February) is now open.

Attached are the details of the sessions.

Please click on this link to register on the WFA website and follow the instructions.

<https://www.academyfootball.co.uk/play-football/after-school-clubs/>



Excellence: everyone, everywhere, every day.



# Cooking Club

Kids Kitchen After School Cooking Club are starting to take bookings for the new year, so if you'd like to have some fun in the kitchen, come and join us on:

Wednesdays from 3.30pm to 4.45pm

From 8th January to 2nd April (12 sessions), limited availability.

Cost: £132, payable before 20th December.

The cost includes all ingredients and equipment, and the kids get to try the food they make at the end of the class, and the rest is brought home to show off to mums and dads.

email [jo@beyondbakedbeans.co.uk](mailto:jo@beyondbakedbeans.co.uk)

mobile number 07966 585 545 for any questions.



# Computer Xplorers

Computer Club will be Coding with Minecraft every Wednesday from 8th January to 12th February.

Wednesdays 3.30pm-4.30pm for Years 1 - 6.



Please see the link below if you wish to sign your child up.

<https://computerxplorers.co.uk/>



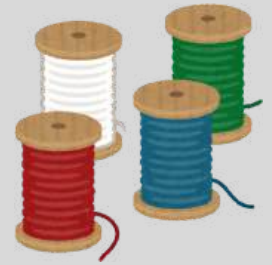
Excellence: everyone, everywhere, every day.

# Sewing Club

Sewing club has been buzzing this year with KS2 children who are keen to learn new skills. We have made a variety of projects, some which the children have designed or requested. It is a lovely way to wind down from a day at school, improving fine motor skills and feeling relaxed.

Please see the link below if you wish to sign your child up.

<https://tinyurl.com/mwd5rcf8>



If you have any questions, please email: [thesewingcoach@gmail.com](mailto:thesewingcoach@gmail.com)

# Chess Club

We teach children chess right from the basics through to being ready to compete at national level for those that show exceptional aptitude for the game. All children will start with our level 1 school course booklet which familiarises children with the game, teaching them about check and checkmate. As well as teaching winning strategies we also provide ample opportunity to practise with games and group exercises keeping the children engaged and having fun whilst learning.

To register for a place for next term you need to click the link below, complete your child's details and make payment for the club. You will receive an automated email confirming payment has been made.

Thursdays 3.30 - 4.30pm

Booking Link <https://ukchess.fillout.com/t/1a96bEP88tus>



The cost for the term is £132 and is payable at the time of booking.



**Excellence: everyone, everywhere, every day.**



# Drama



## Mark Hallett Drama



DRAMA SESSIONS FOR YEARS 1, 2 and 3

**Tuesday 7th January-Tuesday 11<sup>th</sup> February**

3.20pm to 4.30pm in the Infant Hall

Cost £54.00

First come first served basis, as limited spaces available

“Mark Hallett Drama is now in its 15th year at Ashdene. Mark is a professional actor having appeared in many TV programmes including Corrie, Emmerdale, Waterloo Rd and The Royal to name a few; as well as Adverts for McDonalds, The World Cup, Seven Seas, Budweiser & Woman’s Own.”

“Marks classes are always fun and engaging, covering things like Music and Movement, Confidence building, Story Telling, Games and much more...”



## Mark Hallett Drama



DRAMA SESSIONS FOR YEARS 4, 5 and 6

**Wednesday 8<sup>th</sup> January-Wednesday 12<sup>th</sup> February**

3.30pm to 4.40pm in the Infant Hall

Cost £54.00

“Mark Hallett Drama is now in its 15th year at Ashdene. Mark is a professional actor having appeared in many TV programmes including Corrie, Emmerdale, Waterloo Rd and The Royal to name a few; as well as Adverts for McDonalds, The World Cup, Seven Seas, Budweiser & Woman’s Own.”

“Marks classes are always fun and engaging, covering things like Music and Movement, Confidence building, Story Telling, Games and much more...”

For availability please email Mark at [markhallett@sky.com](mailto:markhallett@sky.com)



Excellence: everyone, everywhere, every day.

# French Club

Bonjour! My name is Tania Moinian and I am a licensee and teacher for La Jolie Ronde, a company that has been at the forefront of Modern Language teaching since 1983.

I am pleased to announce that enrolment for the Key Stage 2 French Club is now open for the Spring term. French Club will run every Thursday 3.30pm-4.30pm from Thursday, 9th January 2025 to Thursday, 3rd April 2025.

The cost is £7 per lesson plus £16 for the course book.

The book includes a media app from which you can access all the La Jolie Ronde audio materials and is a requirement of the course. The book is only required for new starters. The total cost for the term is £84 (12 lessons) + £16 (book).

If your child is interested in joining the French Club, please contact me with the following information to secure a place:

- child's name
- year group (Years 3-6)
- any medical conditions or allergies
- email address
- contact number



Places are limited so will be allocated on a first come, first served basis.

Tania Moinian

Email: [madamemoinian@outlook.com](mailto:madamemoinian@outlook.com)

Mob: 07870 262215

# Spanish

Spanish Club Fun Spanish sessions with games, songs and rhymes. Food tasting and craft activities too.

Year 1 Spanish club 8.15 - 8.45am Tuesday.

Year 1-3 Spanish club Tuesday lunchtime.

Year 4-6 Spanish club Tuesday lunchtime.



All current students will have an automatic place and any new pupils will be first-come, first-served.

Text Kathryn on 07794 124288 if you are a new pupil wishing to book a place.



**Excellence: everyone, everywhere, every day.**



# Bricks4Kidz

Bricks4Kidz will be building models from our Mission 2 Space theme where the children love our interactive Technics Bricks4Kidz models.

Get inspired to go on an adventure and join Bricks4Kidz on a Mission 2 Space! Discover some incredible structures at Kennedy Space Centre's Launch Complex 39, travel the surface of the moon on a lunar rover and explore Mars on-board the 'Curiosity'.

We'll provide the LEGO Bricks; all you need to bring for this adventure is your imagination!

For information see

[https://www.youtube.com/watch?v=zSJCY1\\_Zu0I](https://www.youtube.com/watch?v=zSJCY1_Zu0I)

To book please follow

<https://booking.bricksnotts.com/bookings/course-info/733>



**Excellence: everyone, everywhere, every day.**

## TAKEHOME



## In the news this week

Wicked, the hugely successful Broadway musical, has recently premiered worldwide as a film. Wicked shares a different perspective of the events in the magical land featured in 'The Wizard of Oz', prior to Dorothy's arrival. It is the story of Elphaba (a misunderstood witch), who later becomes the Wicked Witch of the West, and her friendship with Glinda, who becomes the Good Witch. Karis Musongole, aged 10 from Manchester, plays the young version of Elphaba.

### Things to talk about at home ...

- > What have you heard about the film, Wicked? Is it something you have seen or would like to see? Ask someone at home. Are they familiar with the story of The Wizard of Oz?
- > Do you like performing on stage? Do you like other roles or responsibilities in plays or performances? Talk about the importance of each role and how our different strengths can all be celebrated.

Please note any interesting thoughts or comments

Share your thoughts and read the opinions of others

[www.picture-news.co.uk/discuss](http://www.picture-news.co.uk/discuss)



## Key Dates

Wednesday 11th December - Christmas Jumper Day

Thursday 12th December - KS2 Stockport Plaza Panto

Monday 16th December - KS1 Lowry Panto

Tuesday 17th December - KS1 Christmas Performance 11am

Tuesday 17th December - KS2 Christmas Performance 4pm

Wednesday 18th December - EYFS Christmas Performance 9.30am KS1 Hall

Thursday 19th December - Christmas Lunch

Friday 20th December - Christmas Parties

Friday 20th December - School closes

Monday 6th January - School reopens

Thursday 23rd January - Year 3 Parent Lunch 11.30am



Excellence: everyone, everywhere, every day.



# Community News

MULTISPORTS COACHING

Spaces very limited

## CHRISTMAS

**LET'S VISIT LAPLAND**  
FRIDAY 20TH DECEMBER

**CHRISTMAS PARTY**  
MONDAY 23RD DECEMBER



- GINGERBREAD BAKING & DECORATING
- REINDEER FOOD MAKING
- MAKE A TOY IN THE ELVES WORKSHOP
- MEET SANTA
- CHRISTMAS BINGO
- WREATH MAKING
- DESIGN & BAUBLE
- WINTER WONDERLAND SHOW
- CHRISTMAS WRAPPING STATION



- MAKE A CHRISTMAS EVE BOX
- CHRISTMAS DISCO
- FESTIVE FACE PAINTING
- DECORATE THE TREE
- COZY CHRISTMAS MOVIE
- PIN THE NOSE ON RUDOLPH
- DIY HOT CHOCOLATE KITS
- CHRISTMAS LUNCH
- CHRISTMAS KARAOKE
- CANDY CANE HUNT

**BOOK NOW**  
[WWW.MUJ.TISPORTSCOACHING.CO.UK](http://WWW.MUJ.TISPORTSCOACHING.CO.UK)

Dance at the Smithy  
**D&T'S**  
Dance & Theatre School

PRESENTS


# SNOW WHITE



**THE EVANS THEATRE**  
WILMSLOW LEISURE CENTRE

**DECEMBER 2024**  
Thursday 12th - 7pm | Friday 13th - 7pm | Saturday 14th - 1pm & 5pm | Sunday 15th - 1pm & 5pm

**TICKET PRICES £14-£22**  
[www.ticketsource.co.uk/snowwhite-datsproductions](http://www.ticketsource.co.uk/snowwhite-datsproductions)



11th January 2025 - 9 a.m.

## Upper Third (Year 7) Entrance Exam

Register your son/daughter at [www.stbedes.co.uk](http://www.stbedes.co.uk)

St Bedes College 1878

Chartered 1992  
Independent College  
For boys and girls  
aged 3-18

**Mark Hallett Drama**

**“DRAMA FUN DAY”  
AT ASHDENE PRIMARY  
SCHOOL, Thoresway  
Rd, Wilmslow, SK9 6LJ**

**FRIDAY 3rd JAN 2025**

For children aged 7 -13 years  
Time-9.30am-3.30pm (drop off from 9am)  
Where-Infant Hall  
Cost-£30

Children will need to bring a packed lunch and wear loose comfortable clothing. The day will include a variety of themes such as music and movement, Team Work, Creative thinking, confidence building, Life Skills, Drama games and Improvisation.



Excellence: everyone, everywhere, every day.



# Cheshire East Autism Team

CEAT's Family Liaison Officer and a specialist support assistant will be available to chat and offer advice and support to parent/carers of children and young people who have social and communication differences (whether diagnosed or not) regarding challenges they may be experiencing at school and/or home.



Monks Coppenhall Family Hub  
Remer Street, Crewe, CW1 4LY

Drop-in on Thursday 30th January 2025  
10am-12pm

## Contact Us



Ashdene Primary School,  
Thoresway Road,  
Wilmslow,  
Cheshire  
SK9 6LJ

Tel: 01625 917 335

Email: [admin@ashdene.cheshire.sch.uk](mailto:admin@ashdene.cheshire.sch.uk)